



KB PANORAMA
Geoinformation technologies

Application of software products of KB Panorama to create a Smart City

Speaker: **Alexander Kirichenko**



in the market



clients





Cartography



Agroindustry



Flight navigation



City planning



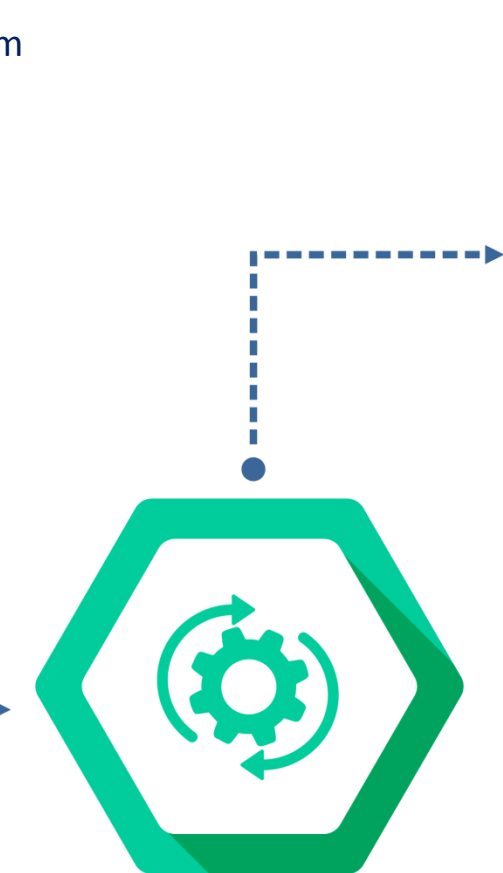
Cadaster



Military industry



Data accumulation in a real-time mode
manual or automated input from sensors



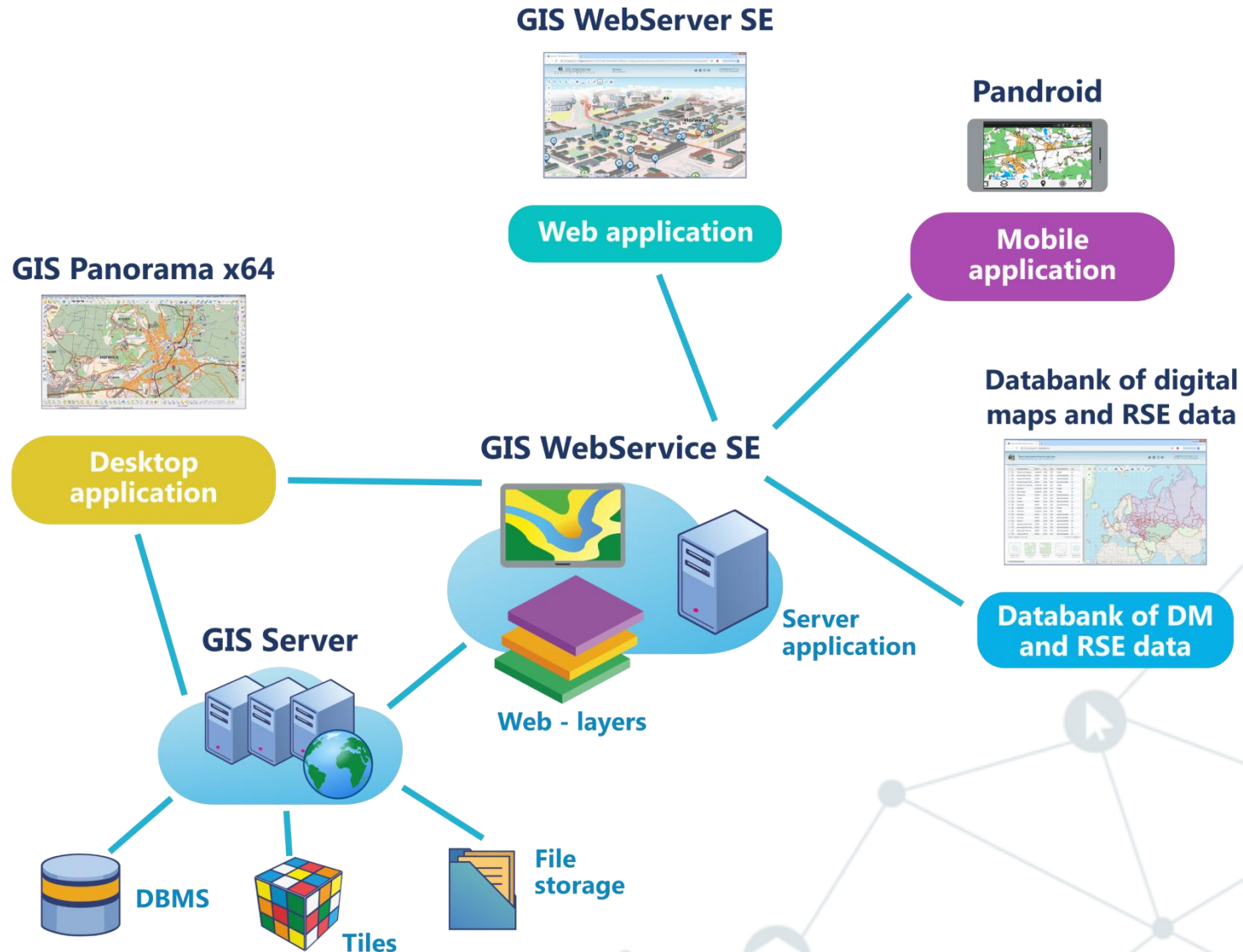
Data processing
Analytical and geoinformation systems

Visualization

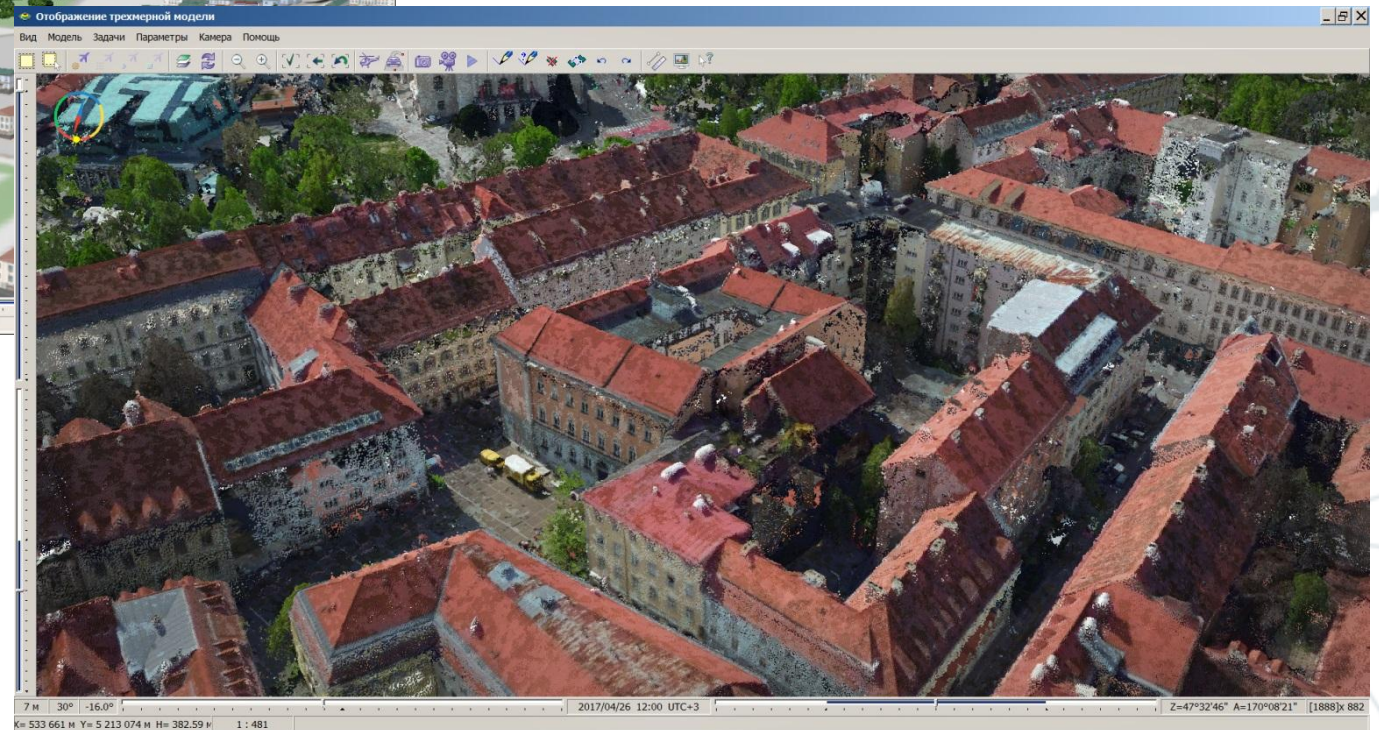
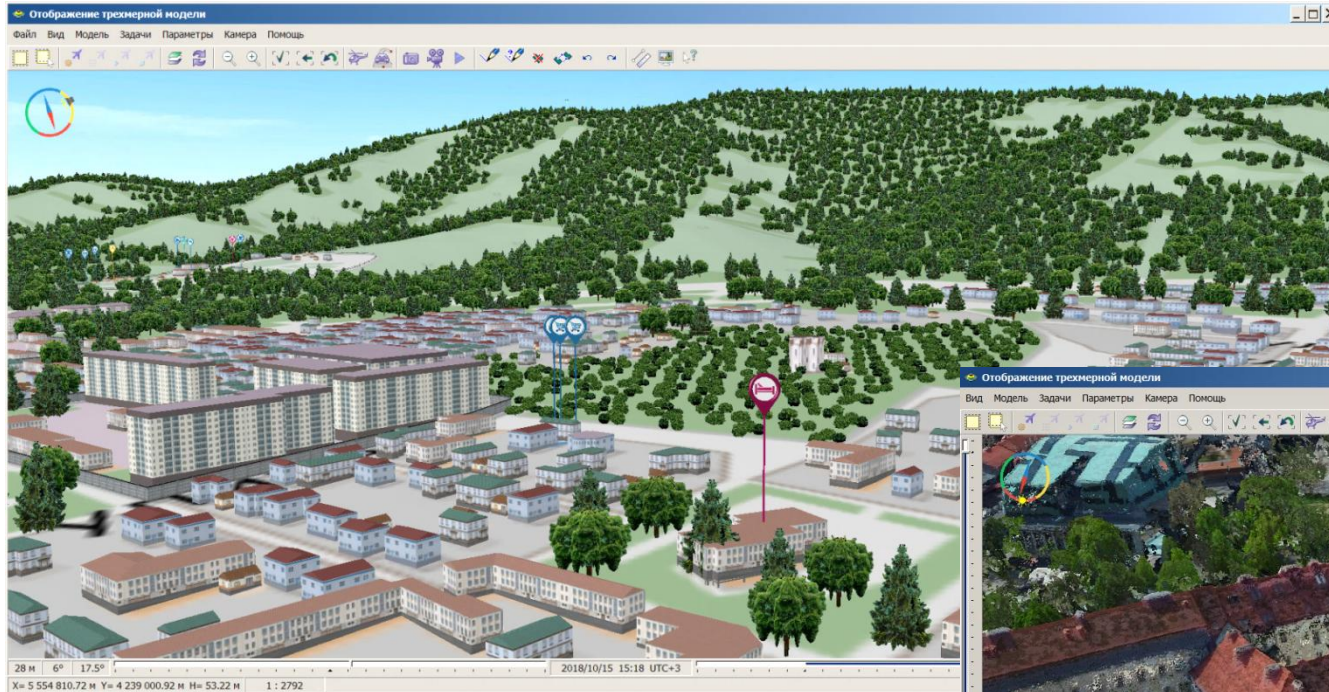


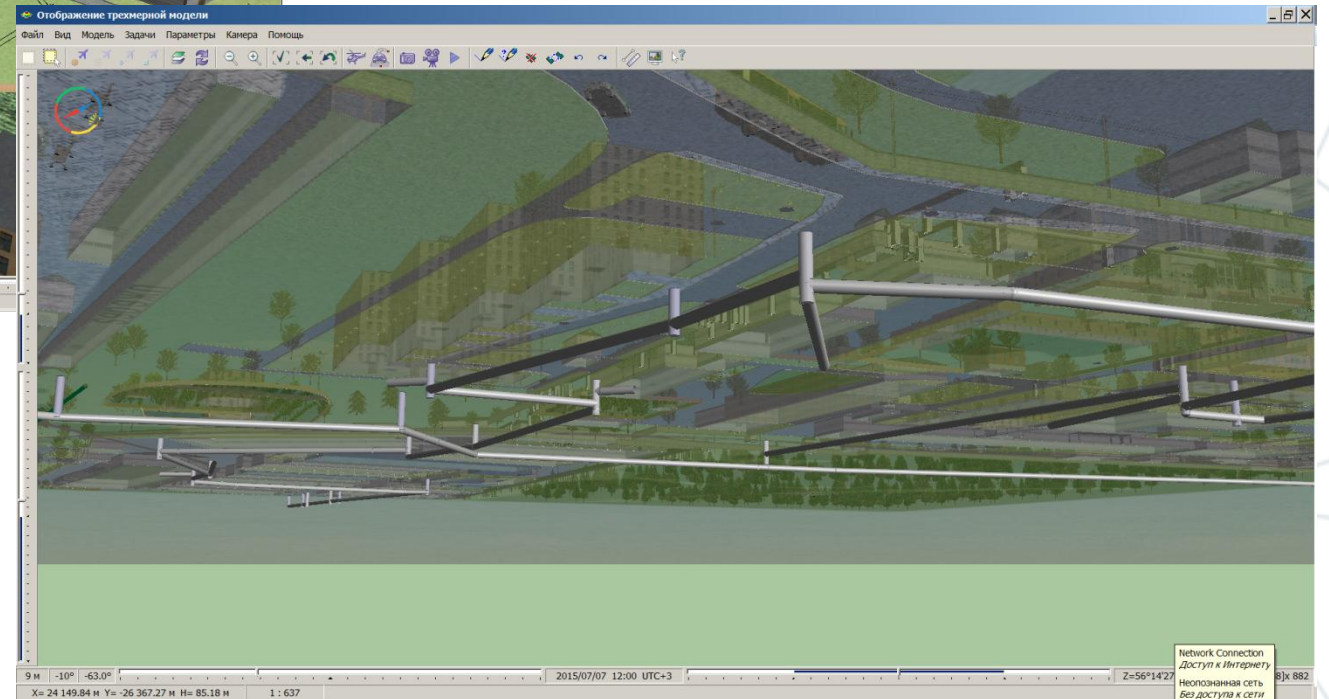
Monitoring and management

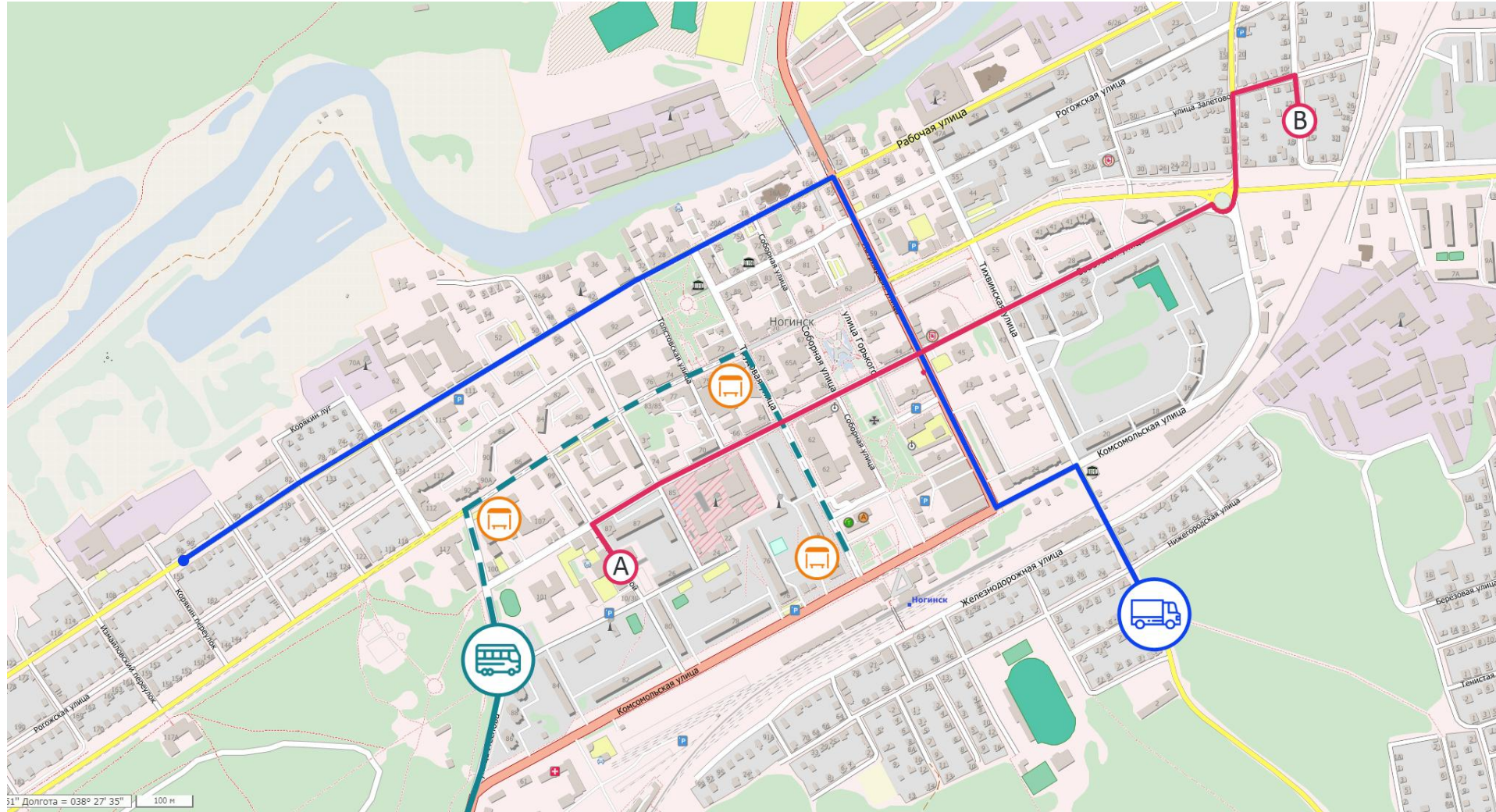


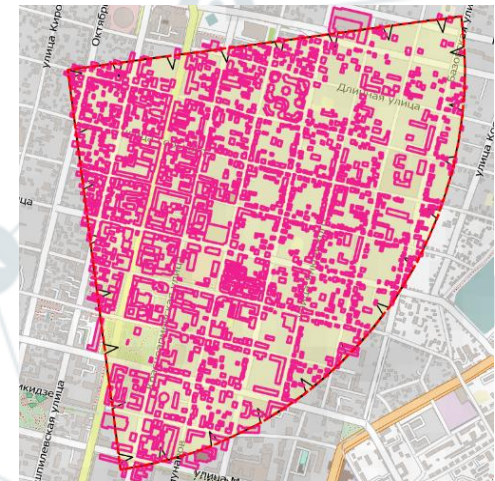
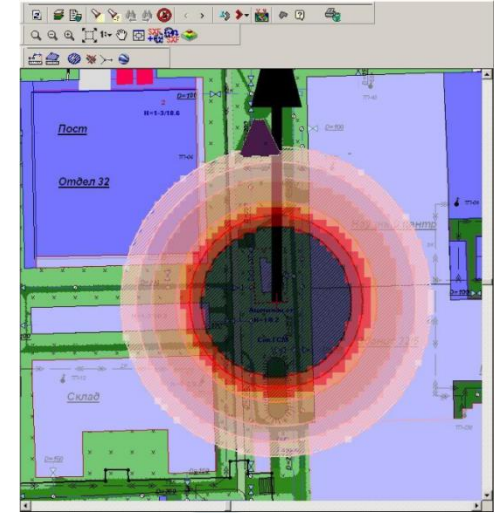
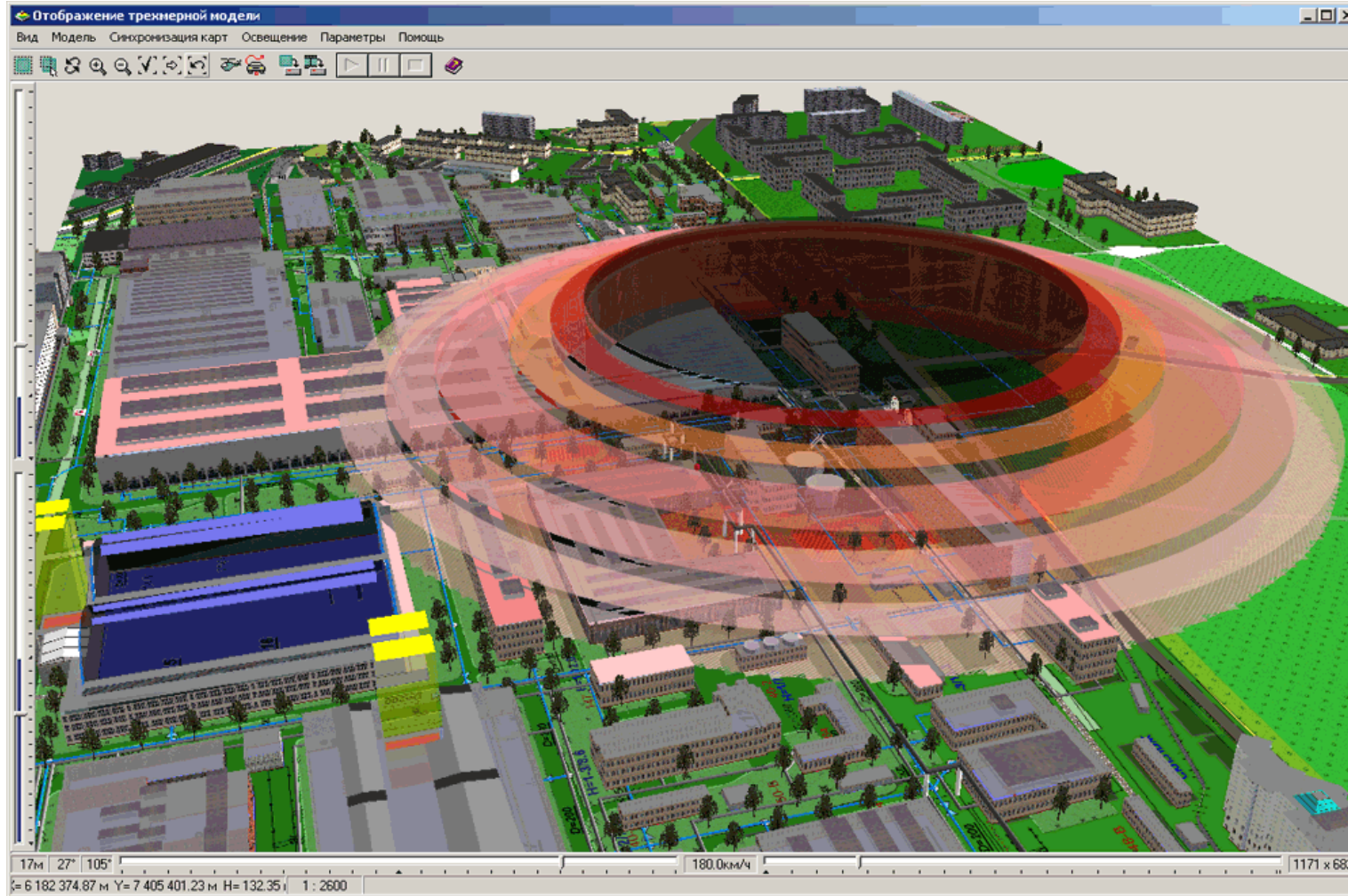


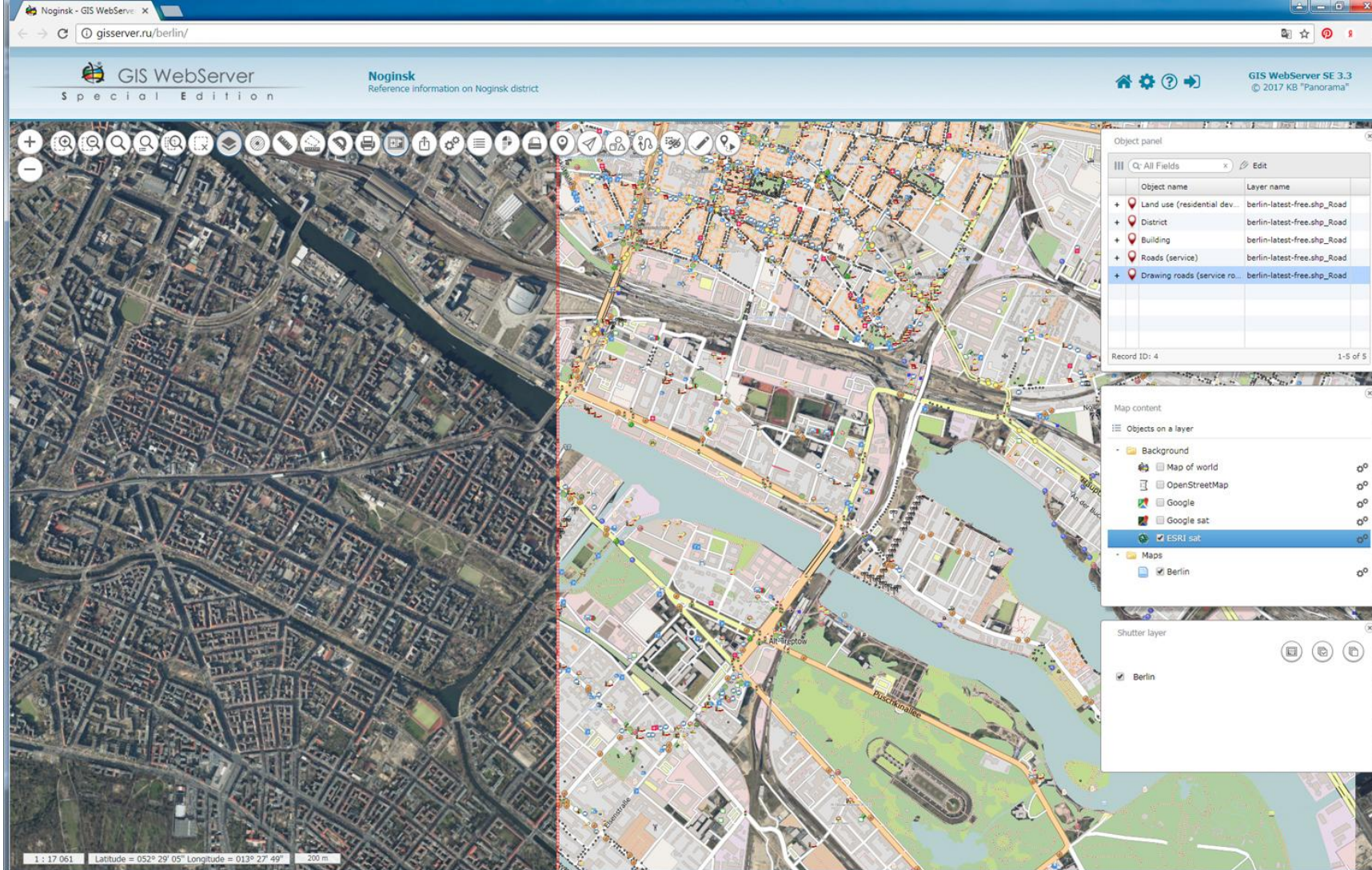
Accounting of city objects and application of 3D











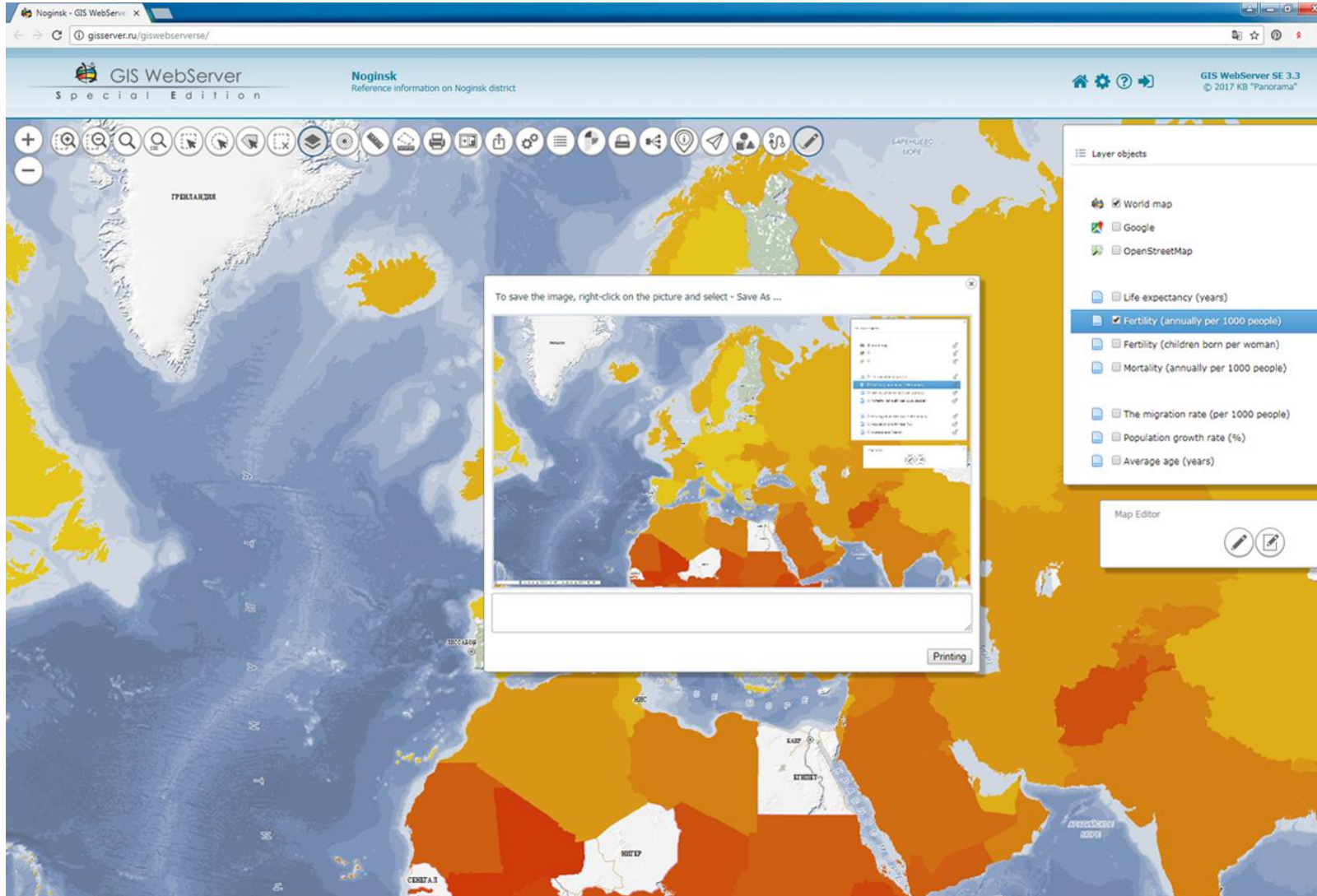
The screenshot displays a web browser window with the URL `gisserver.ru/berlin/`. The page header includes the "GIS WebServer Special Edition" logo and the text "Noginsk Reference information on Noginsk district". The main map area shows a satellite view of Berlin with a red dashed line indicating a specific geographic boundary. A toolbar at the top left contains various navigation and editing tools. On the right side, there are three panels:

- Object panel:** A table listing data layers with their names and layer names.
- Map content:** A list of map layers including Background, Map of world, OpenStreetMap, Google, Google sat, ESRI sat, and Maps.
- Shutter layer:** A panel for managing the visibility of the Berlin layer.

At the bottom of the map, a scale bar indicates a scale of 1:17,061, and coordinates are shown as Latitude = 52° 29' 05" and Longitude = 13° 27' 49".

Object name	Layer name
+ Land use (residential dev...	berlin-latest-free.shp_Road
+ District	berlin-latest-free.shp_Road
+ Building	berlin-latest-free.shp_Road
+ Roads (service)	berlin-latest-free.shp_Road
+ Drawing roads (service ro...	berlin-latest-free.shp_Road

Object name	Layer name
+ Land use (residential dev...	berlin-latest-free.shp_Road
+ District	berlin-latest-free.shp_Road
+ Building	berlin-latest-free.shp_Road
+ Roads (service)	berlin-latest-free.shp_Road
+ Drawing roads (service ro...	berlin-latest-free.shp_Road



The screenshot displays a web browser window with the URL `gisserver.ru/giswebservice/`. The page header includes the "GIS WebServer Special Edition" logo and the text "Noginsk Reference information on Noginsk district". The main map area shows a thematic map of Europe with a color scale from blue (low values) to red (high values). A print dialog box is open in the center, displaying a smaller version of the map and a "Printing" button. On the right side, a "Layer objects" panel lists several layers, with "Fertility (annually per 1000 people)" selected. Below this panel is a "Map Editor" section with two icons.

Layer objects

- World map
- Google
- OpenStreetMap
- Life expectancy (years)
- Fertility (annually per 1000 people)
- Fertility (children born per woman)
- Mortality (annually per 1000 people)
- The migration rate (per 1000 people)
- Population growth rate (%)
- Average age (years)

Map Editor



KB PANORAMA
Geoinformation technologies

Thank you for attention!

Speaker:
Alexander Kirichenko
a.s.kirichenko@gisinfo.ru

www.gisinfo.ru
www.gisinfo.net
panorama@gisinfo.ru