

OneAtlas Data

Airbus Imagery and Services at your fingertips

40.437°N
23.642°W

TALLY#:
1. VESSEL #13749-1289
2. VESSEL #46096-3487
3. VESSEL #90947-3486
4. VESSEL #10090-6475
5. VESSEL #99847-1784

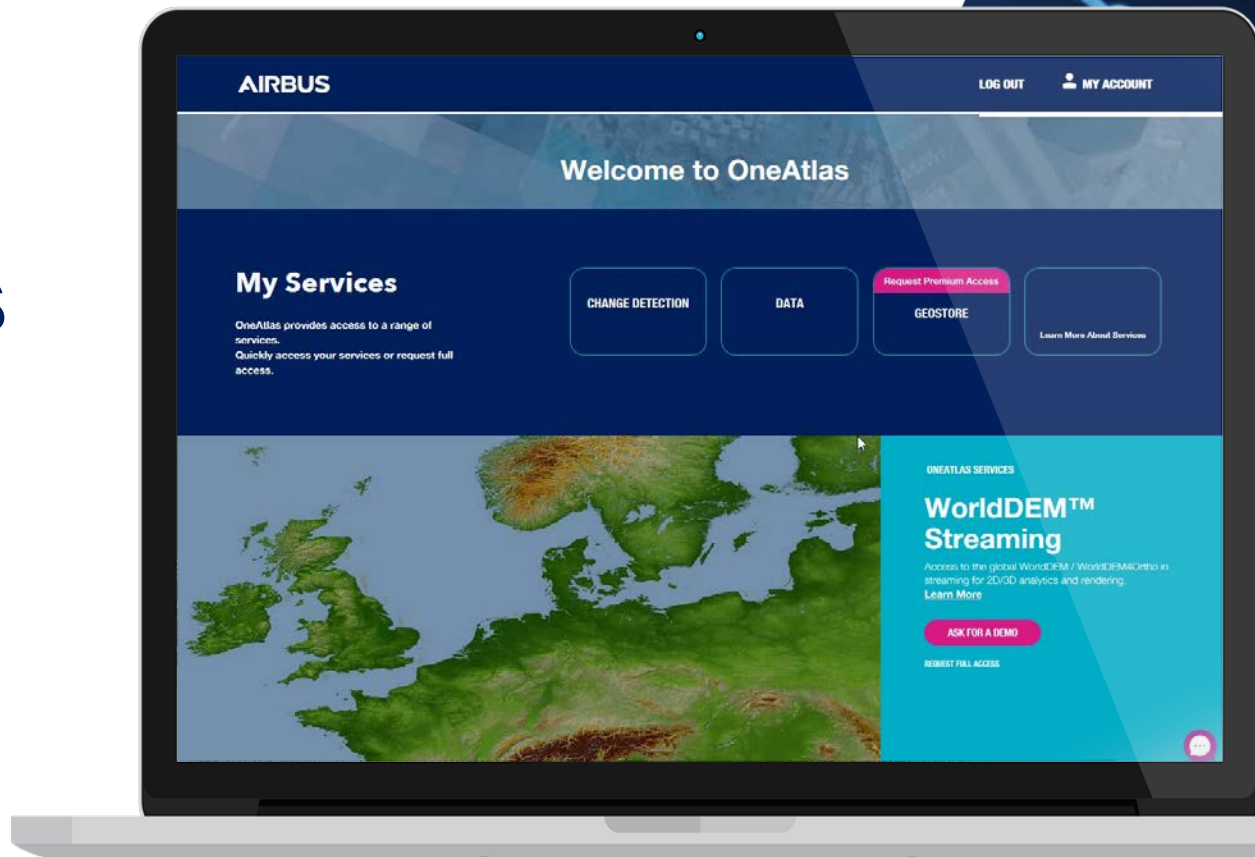
40.427°N
23.642°W

TALLY#:
145.27854850 - 28000
234.40789900 - 14490

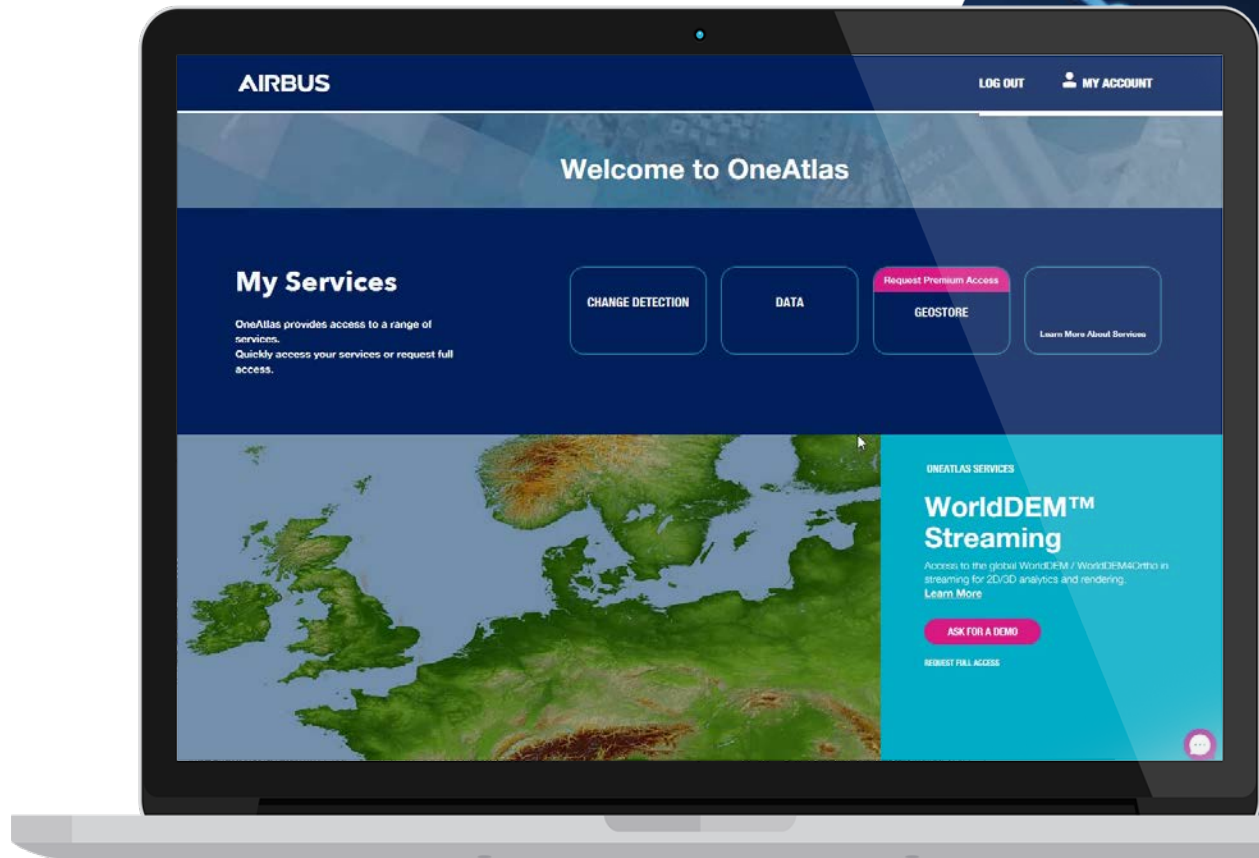
**For a long time,
accessing data has been
difficult**

You need a reliable and trust-worthy provider, but you also need your data quickly and easily

Quick and Easy access to Data



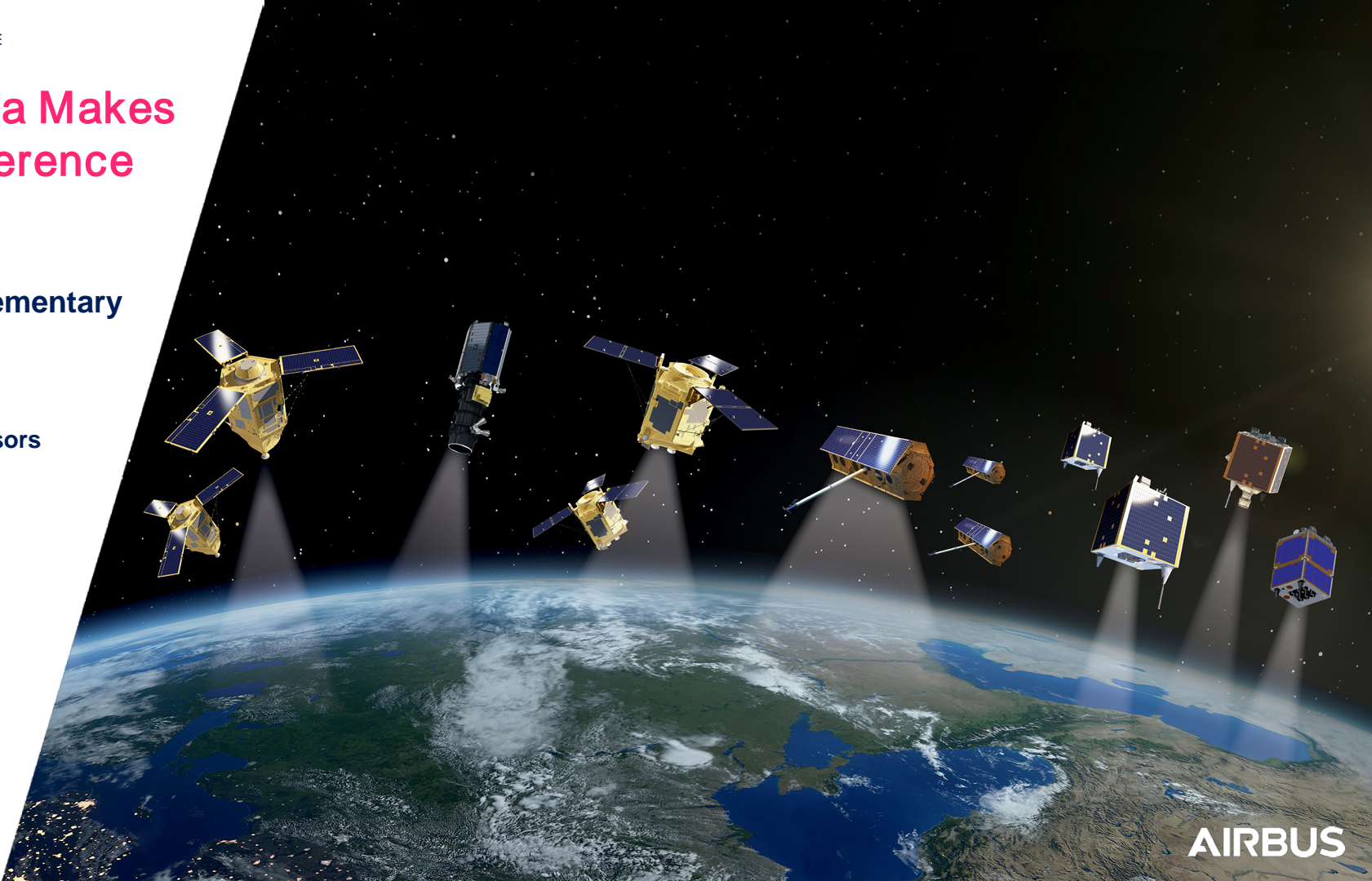
All in one place




Our Data Makes the Difference

**14 complementary
satellites**

***including
5 partner sensors**




Pléiades Neo

 30 cm
Revisit capacity
daily, anywhere


Daily acquisition capacity:
2,000,000 km²

Pléiades 1A/1B

 50 cm
Revisit capacity
twice daily, anyway


Daily acquisition capacity:
700,000 km²

Vision-1

 90 cm
Revisit capacity
anywhere


Daily acquisition capacity:
20,000 km²

SPOT 6/7

 1,5 m
Revisit capacity
daily, anyway


Daily acquisition capacity:
6,000,000 km²

Radar Constellation

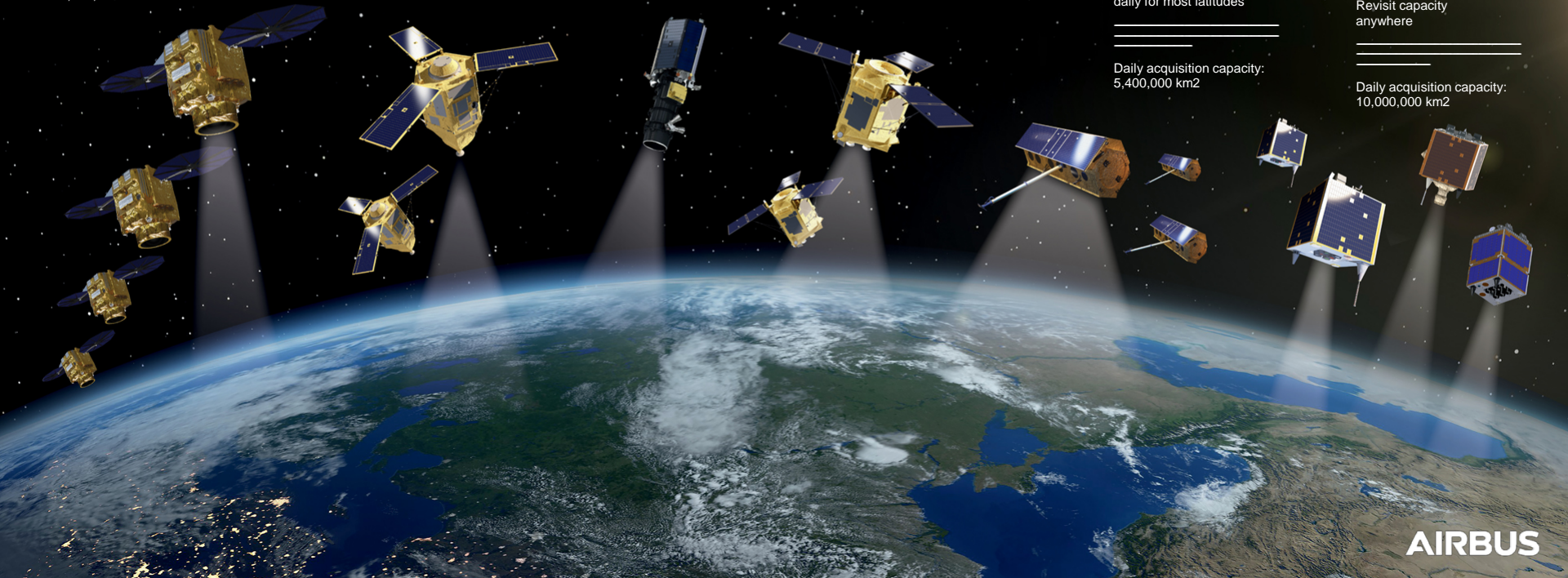
 From 25cm to 40
m
Revisit capacity
daily for most latitudes

Daily acquisition capacity:
5,400,000 km²

DMC Constellation

 From 12 to 24 m
Revisit capacity
anywhere

Daily acquisition capacity:
10,000,000 km²



Introducing Pléiades Neo

Airbus' most advanced constellation with very high resolution imagery and optimum reactivity

Designed for a

10-YEAR
NOMINAL LIFETIME

100%
COMMERCIALY AVAILABLE

30cm
RESOLUTION

4 IDENTICAL
SATELLITES

Revisit

2-TIMES
A DAY

LAUNCH

2020

Courtesy IGN France 2014/2015



Pléiades Neo
**30CM RESOLUTION
IMAGERY**

AIRBUS

An aerial multispectral satellite image of a city. The vegetation is rendered in a bright red color, while buildings and roads are in shades of grey and white. The image shows a complex urban layout with several large, multi-story buildings and a network of streets. The red color highlights the density and distribution of greenery in the area.

Spectral resolution

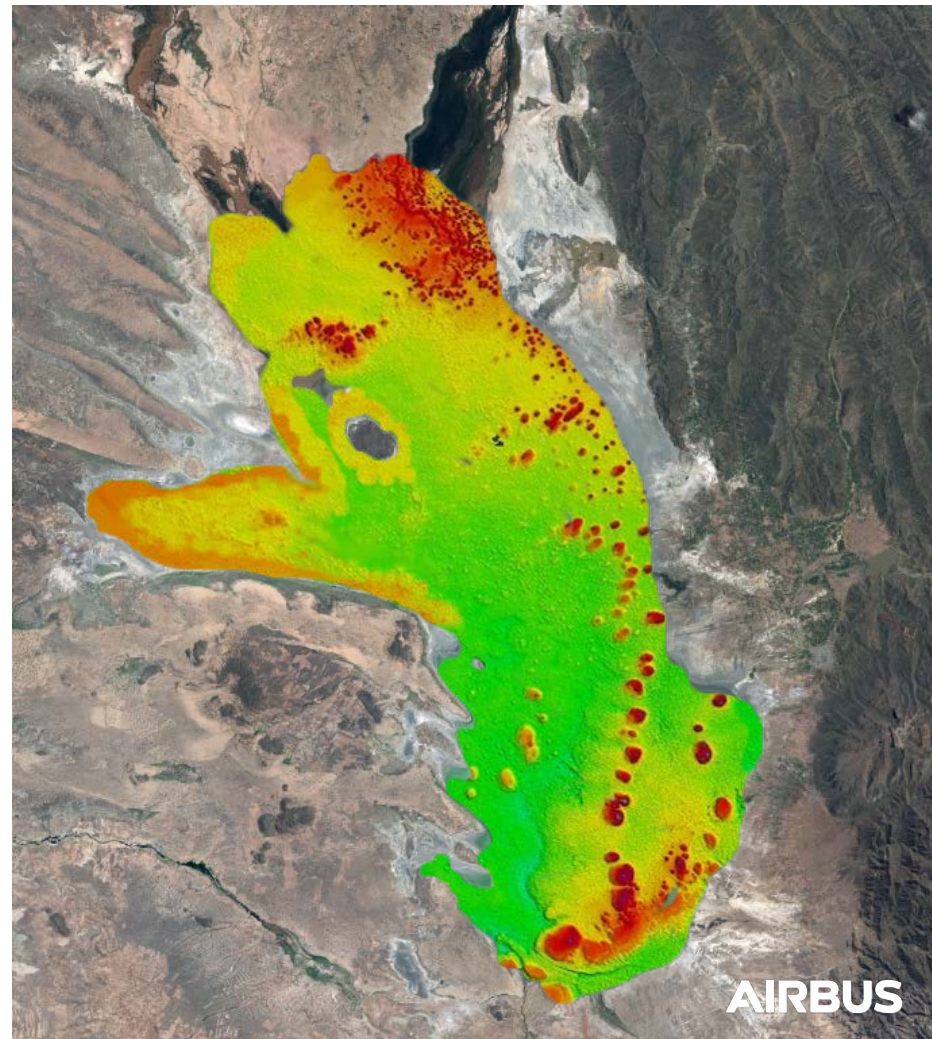
Pléiades Neo delivers
6 multispectral
channels

AIRBUS

Deep Blue

An additional spectral channel for bathymetry applications:

- ▶ Deeper penetration in water bodies
- ▶ Clearer understanding of waterways
- ▶ Improved safety of marine navigation



Red Edge

An additional spectral channel for vegetative applications:

- ▶ Crop and vegetation status through photosynthesis characterisation



Agile System

A Pléiades-like agility

N/S STRIPS

STEREO / TRISTEREO

14KM SWATH

AIRBUS

Global coverage capacity

Up to 2million km² every day!

Up to 7,500 km² in a single pass.



Track

AIRBUS

Global coverage capacity

Up to 2million km² every day!

Up to 15,000 km² of consistent coverage within a day.



OneAtlas Data

IMAGERY

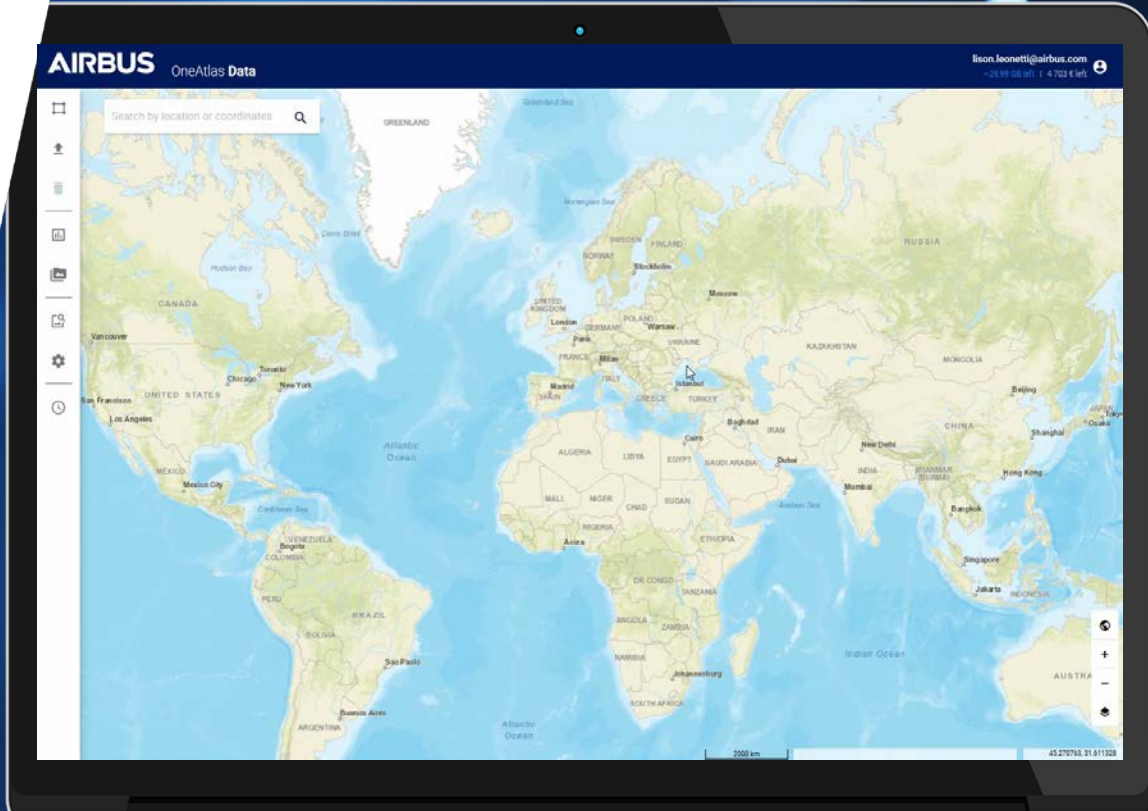
Archive, recent and Tasking
Multi-resolution and sensors

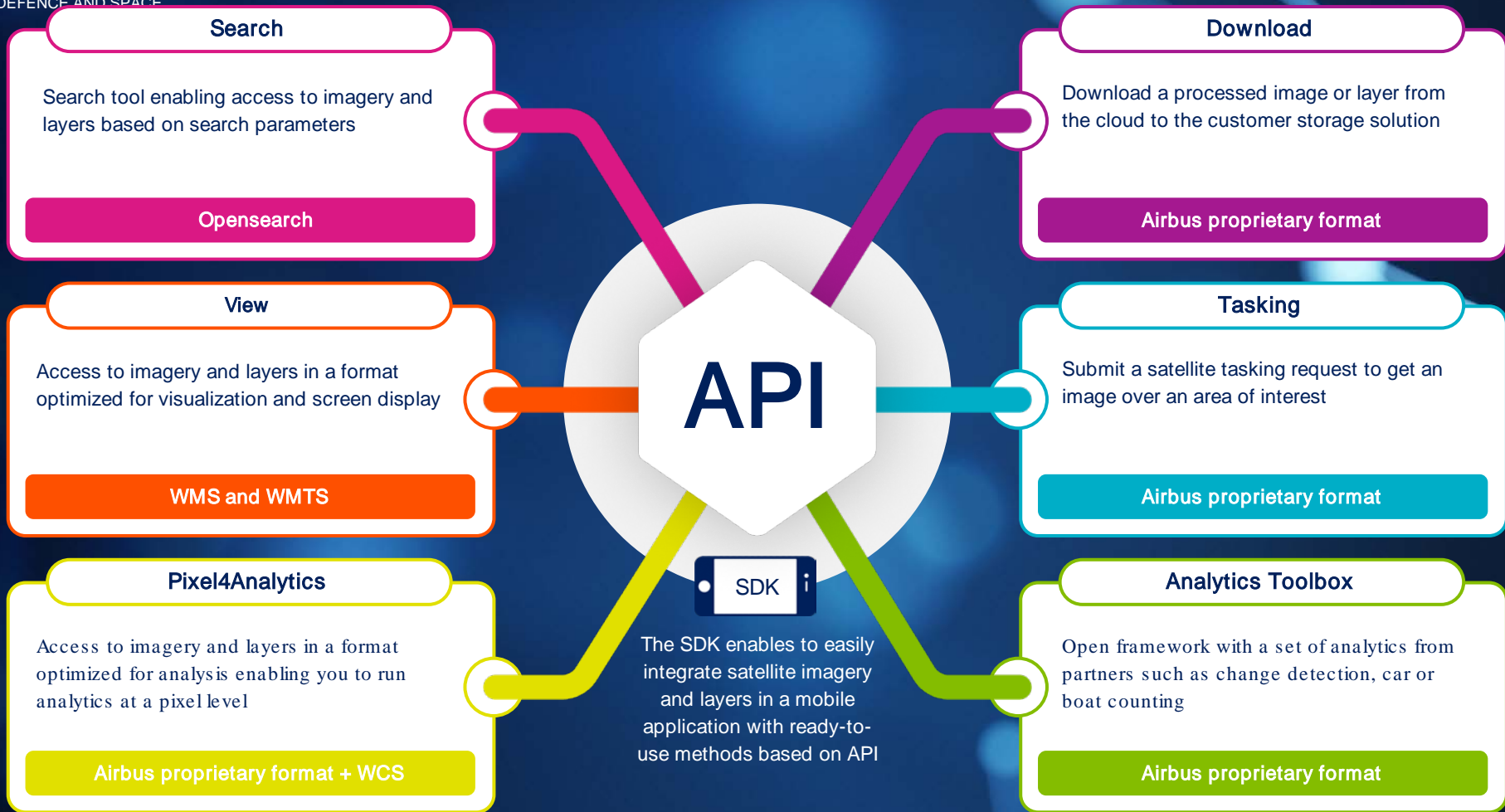
LAYERS

Basemap, reliable context
Digital Elevation Model

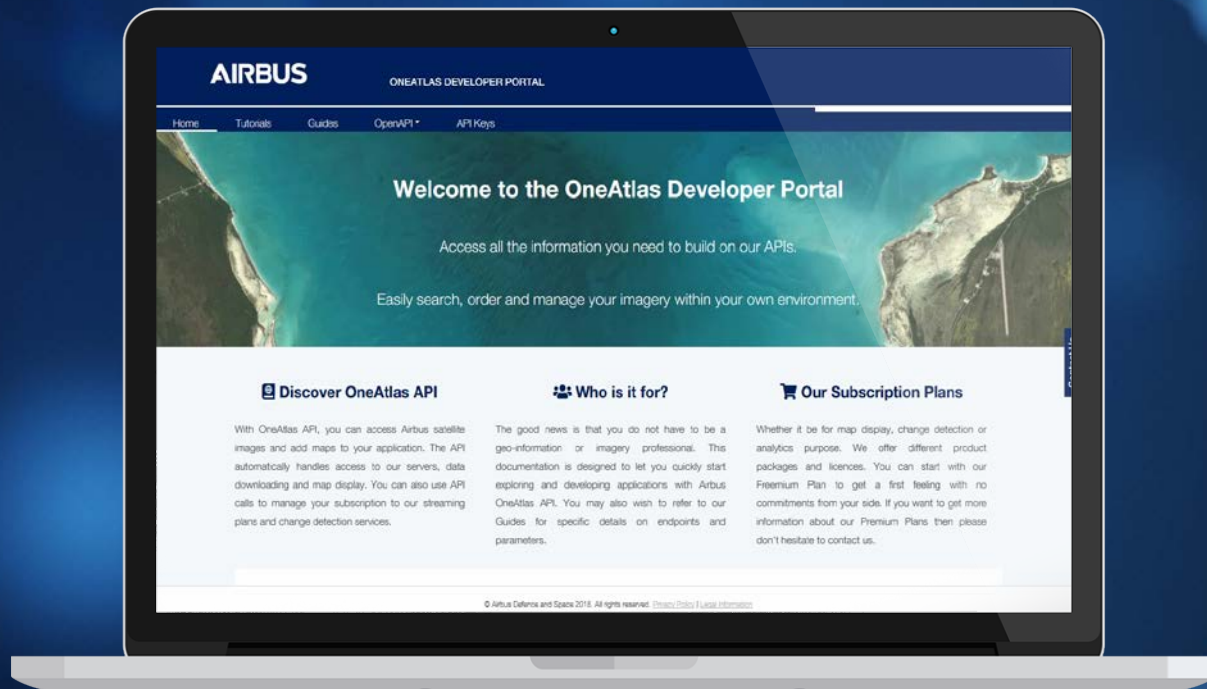
ANALYTICS

Objects identification
Change detection





Check out our Developer Portal



Access all the information you need to build on our
APIs and mobile SDK.

Instant access to imagery and layers



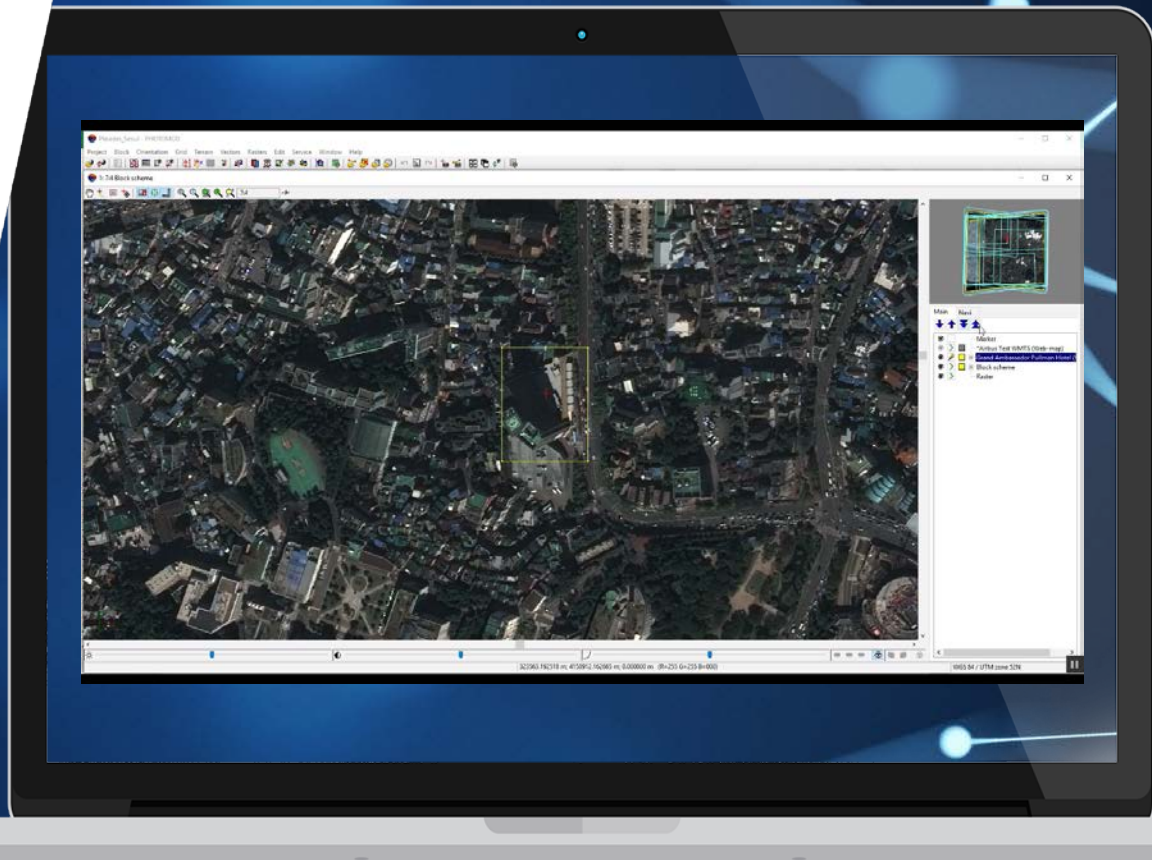
**Anytime,
Anywhere,
Any device**



PHOTOMOD INTEGRATION

OneAtlas Data at your fingertip

Straight from Photomod
interface



OneAtlas Data

Key Benefits

Quick & Easy



Pay only for what you need



Fresh



Flexible



Discover what the OneAtlas platform can do for you.

www.oneatlas.airbus.com

40.437°N
23.642°W

TALLY#:
1. VESSEL #13748-1283
2. VESSEL #48696-3467
3. VESSEL #90547-3485
4. VESSEL #18993-8475
5. VESSEL #99947-1784

PIER#:
145.27884955 - Q89W
234.45789960 - Y48K

40.427°N
23.642°W

OneAtlas Data Free Trial

oneatlas.airbus.com

Select 3 areas to stream from 12 different locations

(up to 5 000 tiles) in WMS/ WMTS



Barcelona

Harbour



Boston

Convention
Center



Budapest

City Center



Cape Town

Harbour



Casablanca

Harbour



Dubai

Khalifa



Istanbul

Urban Area



Mexico City

Airport



**Rio de
Janeiro**

Barra da Tijuca



**San
Francisco**

Airport



Shanghai

Harbour



Sydney

Opera House

**Access to
Change Detection
sample reports**

**Access to
WorldDEM relief
map in 2D**

**Access to
Basemap layer**

(10 meters resolution)

**Valid for
30 days**